

An aerial, high-angle view of a dense urban skyline, likely New York City, featuring numerous skyscrapers and buildings. The image is in grayscale and has a dark, semi-transparent overlay. The text is centered over the image.

SYNDICATE  
LEGAL SUPPORT SERVICES

*REAL ESTATE DEVELOPMENT INDUSTRY*

## REAL ESTATE DEVELOPMENT LEGAL SUPPORT SERVICES



## SYNDICATE LEGAL SUPPORT SERVICES

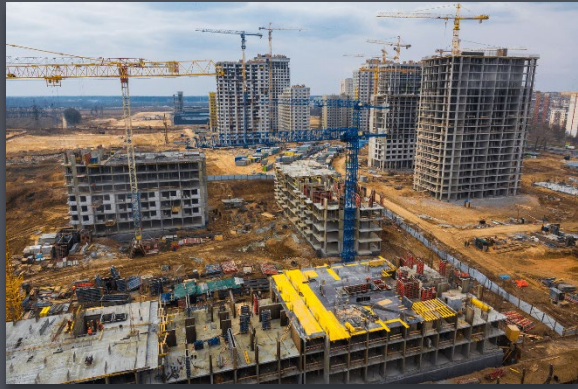
### Team of:

- *Senior Paralegals*
  - *Paralegals*
  - *Law Clerks*
- *Attorney's (advisors)*
- *Retired Judges (advisors)*
- *Industry Specialists*

- Complete Corporate Legal Services
- Administrative Law Actions Defense
- Americans with Disabilities Act (ADA)
- Antitrust & Competition
- Arbitration Proceedings
- Articles of Amendment
- Beneficial Ownership Info Report
- Bankruptcy Filings
- Breach of Contract
- Business Annual Reports
- Business Contract Consulting
- Business Contract Drafting
- Business Contract Review
- Business Filings
- Business Incorporation & Formation
- Business Licenses
- Business Permits
- Business Plan Development & Assessment
- Business / Corporate Resolutions
- Buy, Sell, Rent & Lease Agreements
- Bylaws
- Capital Markets Consultation
- Capital Markets Legal & Compliance
- Capital Markets Listing - OTC, NASDAQ & NYSE
- Capital Markets Listing - International Exchange
- Civil Litigation Support
- Commercial Real Estate Law
- Construction Law
- Consumer & Commercial Disputes
- Data Privacy & Cybersecurity Consultation
- Debt Collection, Negotiation & Settlement
- Deed Services
- Doing Business As Filings ("DBA")
- Entity Conversions
- Environmental Law
- Eviction Law (Tenant Side)
- Eviction Law (Landlord Side)
- Federal Tax ID ("EIN")
- Foreign Corporation Qualification
- Freedom to Operate Analysis
- Immigration Law (sponsorships)
- Independent Contractor Agreements
- Insurance & Risk Management
- Intellectual Property - Copyright
- Intellectual Property - Patent
- Intellectual Property - Trademark
- Intellectual Property Infringement
- International Incorporation
- International Trade Commission
- Labor & Employment (General)



## REAL ESTATE DEVELOPMENT LEGAL SUPPORT SERVICES



## SYNDICATE LEGAL SUPPORT SERVICES

### Team of:

- *Senior Paralegals*
  - *Paralegals*
  - *Law Clerks*
- *Attorney's (advisors)*
- *Retired Judges (advisors)*
- *Industry Specialists*

- Labor & Employment (Hiring & Firing)
- Lease Agreements
- Litigation Support Services
- Mediation of Legal Disputes
- Mergers & Acquisitions
- Non-Disclosure Agreements
- Operating Agreements
- Private Placements
- Promissory Notes
- Real Estate Law
- Regulatory & Compliance
- Recalls & Product Liability Actions
- Secured Lending Law
- Securities & Blue-Sky Compliance
- Small Claims
- Supply Chain Disputes
- Surety Bond Advisory
- Trademark Monitoring
- Trademark Registration
- Trademark Searches
- Traffic Accident Law
- Traffic Ticket Defense
- Warranty & Consumer Protection
- Writs of Attachment
- Writs of Execution
- *Industry* - Purchase, Sale, Lease, Sublease Disputes

- *Industry* - Purchase and Sale Disputes
- *Industry* - Adverse Possession Claims
- *Industry* - Easement Disputes
- *Industry* - Boundary Disputes
- *Industry* - Condominium Association & Cooperative Disputes
- *Industry* - easement Dispute
- *Industry* - Water Intrusion Claims
- *Industry* - Non-Disclosure & Fraud Disputes
- *Industry* - Restrictive Covenants
- *Industry* - Tax Abatements and Change of Special Tax Status
- *Industry* - Fair Housing & Discrimination Disputes
- *Industry* - Insurance Coverage Disputes
- *Industry* - Zoning and Land Use Appeals & Suits
- *Industry* - Partnership & Joint Venture Disputes
- *Industry* - Loan Agreement Enforcements
- *Specialty*: Commercial Real Estate Development
- *Specialty*: Residential Real Estate Development
- *Specialty*: Multifamily Real Estate Development
- *Specialty*: International Real Estate Development
- *Specialty*: Real Estate Investment Companies
- *Specialty*: Real Estate Development Companies
- Much More.....



**SYNDICATE LEGAL SUPPORT SERVICES**

25350 Magic Mountain Parkway

Santa Clarita, California 91355

Direct: (310) 463-5122

Website: [www.SyndicateLegalSupport.com](http://www.SyndicateLegalSupport.com)